

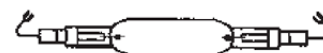
Lamp Current (A): 10.3A  
 Ignitor Voltage (Min.): 5KV  
 Luminaire Rating: Enclosed  
 Burning Position: Horizontal  $\pm 15^\circ$

**MH-TS 2000W/L/K12/45K**
**Product Number: 84203**

**Lamp Type:** High Wattage Double Ended

### Performance Data

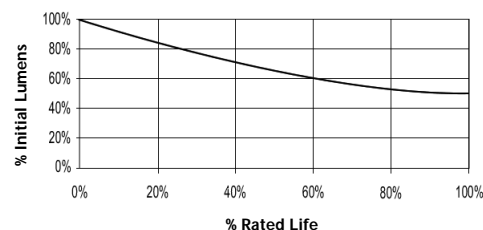
Light Output (Lumens @ 100 hours)	240000
Lamp Lumens Per Watt	112
Rated Life (Hrs. @ 10 Hr. /Start)	5000
Correlated Colour Temperature (K)	4500
Chromaticity (CIE - X Y)	360, 365
Colour Rendering Index (CRI) or (Ra)	68
Typical Warm Up Time (Minutes)	3-5
Typical Hot Restart Time (Minutes)	10-15
Burning Position	Horizontal $\pm 15^\circ$



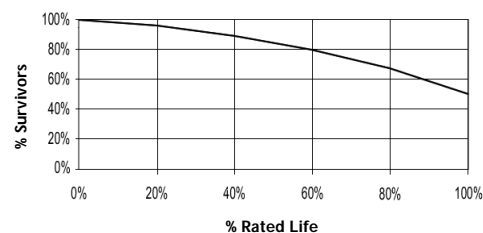
### Physical Data / Requirements

Base Designation	Cable/Lug
Bulb Designation	T29 (T9 USA)
Bulb Diameter (mm)	29
Max. Overall Length (mm)	270
Light Centre Length (mm)	N/A
Effective Arc Length (mm)	138
Max. Base Temperature (°C)	350
Max. Bulb Temperature (°C)	950
Luminaire Type	Enclosed
Socket Pulse Rating (KV)	6
Mercury Content (mg)	133.0

**Lumen Maintenance**



**Lamp Mortality**



### Lamp Electrical Data / Requirements

IEC Standard	-
Lamp Wattage (W)	2150
Lamp Operating Voltage (V)	220
Lamp Operating Current (Amps)	10.3
Min. Open Circuit Voltage (RMS)	340
Min. Starting Pulse (Peak V)	5000-6000
Min. Pulse Width at 4500V (microseconds)	1
Min. Pulse Rate Per 1/2 cycle	1
Pulse Position (Electrical Degrees)	60-90, 240-270

**Revision:** 16.01.12

### Notes:

1) This Product Specification contains data about typical performance at nominal power. Actual values may depend on ballast and applications. Complies with (CE), Low Voltage (CE), WEEE and RoHS Directives.