

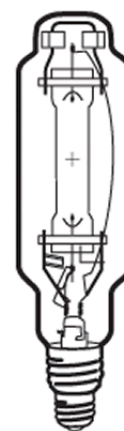
Lamp Current (A): 16.5A
 Ignitor Voltage (Min.): 2.3KV
 Luminaire Rating: Enclosed
 Burning Position: Universal

HIT 2000W/U/230V/742
Product Number: 00067

Lamp Type: Tubular Metal Halide

Performance Data

Light Output (Lumens @ 100 hours)	189000
Lamp Lumens Per Watt	115
Rated Life (Hrs. @ 10 Hr. /Start)	5000V / 2500H
Correlated Colour Temperature (K)	4200
Chromaticity (CIE - X Y)	375, 385
Colour Rendering Index (CRI) or (Ra)	68
Typical Warm Up Time (Minutes)	3-5
Typical Hot Restart Time (Minutes)	10-15
Burning Position	Universal



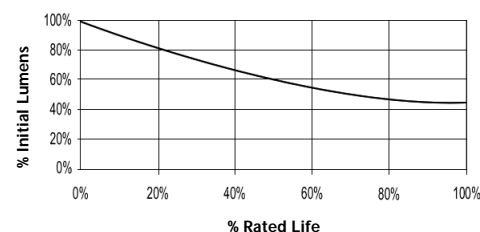
Physical Data / Requirements

Base Designation	E40
Bulb Designation	T100
Bulb Diameter (mm)	100
Max. Overall Length (mm)	430
Light Centre Length (mm)	290
Effective Arc Length (mm)	89
Max. Base Temperature (°C)	300
Max. Bulb Temperature (°C)	600
Luminaire Type	Enclosed
Socket Pulse Rating (KV)	4.5
Mercury Content (mg)	155

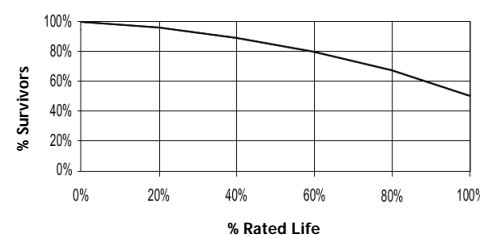
Lamp Electrical Data / Requirements

IEC Standard	-
Lamp Wattage (W)	2000
Lamp Operating Voltage (V)	130
Lamp Operating Current (Amps)	16.5
Min. Open Circuit Voltage (RMS)	220
Min. Starting Pulse (Peak V)	2300
Min. Pulse Width at 2500V (microseconds)	1
Min. Pulse Rate Per ½ cycle	1
Pulse Position (Electrical Degrees)	60-90,, 240-270

Lumen Maintenance



Lamp Mortality



Revision: 01.02.12

Notes:

1) This Product Specification contains data about typical performance at nominal power. Actual values may depend on ballast and applications. Complies with (CE), Low Voltage (CE), WEEE and RoHS Directives.