

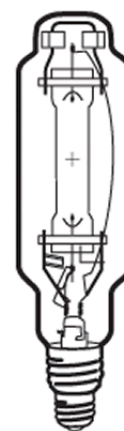
Lamp Current (A): 8.8A  
 Ignitor Voltage (Min.): 1.1KV  
 Luminaire Rating: Enclosed  
 Burning Position: Universal

**HIT 2000W/U/EURO/45K**
**Product Number: 00387**

**Lamp Type:** Tubular Metal Halide

### Performance Data

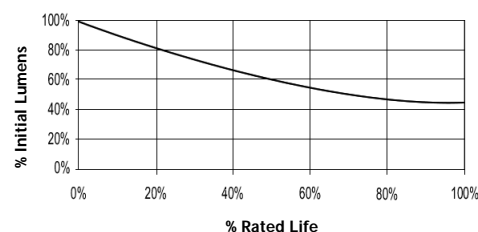
Light Output (Lumens @ 100 hours)	185000V
Lamp Lumens Per Watt	93
Rated Life (Hrs. @ 10 Hr. /Start)	5000V / 2500H
Correlated Colour Temperature (K)	4500
Chromaticity (CIE - X Y)	360, 392
Colour Rendering Index (CRI) or (Ra)	68
Typical Warm Up Time (Minutes)	3-5
Typical Hot Restart Time (Minutes)	10-15
Burning Position	Universal



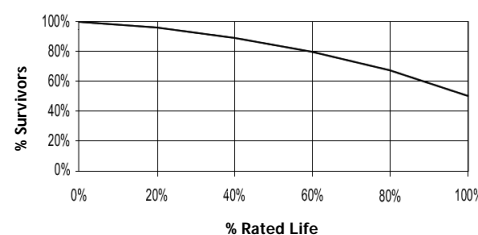
### Physical Data / Requirements

Base Designation	E40
Bulb Designation	T100
Bulb Diameter (mm)	100
Max. Overall Length (mm)	420
Light Centre Length (mm)	220
Effective Arc Length (mm)	104
Max. Base Temperature (°C)	350
Max. Bulb Temperature (°C)	850
Luminaire Type	Enclosed
Socket Pulse Rating (KV)	4.5
Mercury Content (mg)	150

**Lumen Maintenance**



**Lamp Mortality**



### Lamp Electrical Data / Requirements

IEC Standard	-
Lamp Wattage (W)	2000
Lamp Operating Voltage (V)	230
Lamp Operating Current (Amps)	8.8
Min. Open Circuit Voltage (RMS)	342
Min. Starting Pulse (Peak V)	1100
Min. Pulse Width at 900V (microseconds)	1
Min. Pulse Rate Per ½ cycle	1
Pulse Position (Electrical Degrees)	60-90,, 240-270

**Revision:** 03.02.12

### Notes:

1) This Product Specification contains data about typical performance at nominal power. Actual values may depend on ballast and applications. Complies with (CE), Low Voltage (CE), WEEE and RoHS Directives.