

Lamp Current (A): 4.4A  
 Ignitor Voltage (Min.): 4KV  
 Luminaire Rating: Enclosed  
 Burning Position: Horizontal  $\pm 15^\circ$

### MBIL S 1000W

**Product Number: 22417**

**Lamp Type:** High Wattage Double Ended

#### Performance Data

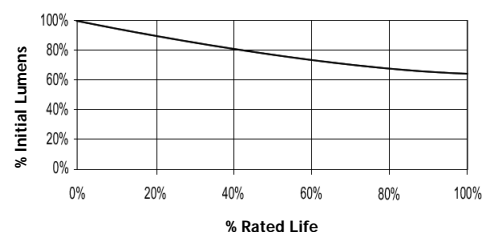
Light Output (Lumens @ 100 hours)	80000
Lamp Lumens Per Watt	80
Rated Life (Hrs. @ 10 Hr. /Start)	6000
Correlated Colour Temperature (K)	5200
Chromaticity (CIE - X Y)	340, 360
Colour Rendering Index (CRI) or (Ra)	65
Typical Warm Up Time (Minutes)	1-2
Typical Hot Restart Time (Minutes)	5-10
Burning Position	Horizontal $\pm 15^\circ$



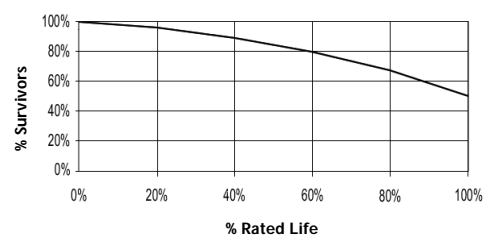
#### Physical Data / Requirements

Base Designation	Rx7s
Bulb Designation	T15 (T5 USA)
Bulb Diameter (mm)	15
Max. Overall Length (mm)	256
Light Centre Length (mm)	N/A
Effective Arc Length (mm)	182
Max. Base Temperature (°C)	350
Max. Bulb Temperature (°C)	850
Luminaire Type	Enclosed
Socket Pulse Rating (KV)	6
Mercury Content (mg)	29.0

**Lumen Maintenance**



**Lamp Mortality**



#### Lamp Electrical Data / Requirements

IEC Standard	-
Lamp Wattage (W)	1000
Lamp Operating Voltage (V)	250
Lamp Operating Current (Amps)	4.4
Min. Open Circuit Voltage (RMS)	342
Min. Starting Pulse (Peak V)	4000-6000
Min. Pulse Width at 3600V (microseconds)	1.3
Min. Pulse Rate Per 1/2 cycle	1
Pulse Position (Electrical Degrees)	60-90, 240-270

**Revision:** 30.08.12

#### Notes:

1) This Product Specification contains data about typical performance at nominal power. Actual values may depend on ballast and applications. Complies with (CE), Low Voltage (CE), WEEE and RoHS Directives.