

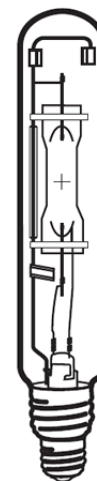
Lamp Current (A): 8.2A
 Ignitor Voltage (Min.): 0.6KV
 Luminaire Rating: Enclosed
 Burning Position: Horizontal $\pm 15^\circ$

HIT 1000W/HOR/DU/743
Product Number: 00396

Lamp Type: Tubular Metal Halide

Performance Data

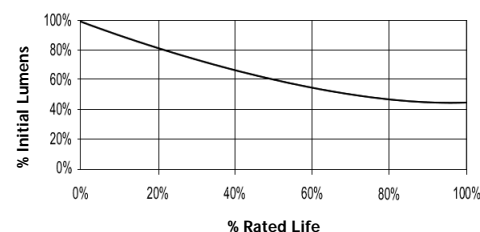
Light Output (Lumens @ 100 hours)	85000
Lamp Lumens Per Watt	85
Rated Life (Hrs. @ 10 Hr. /Start)	8000
Correlated Colour Temperature (K)	4300
Chromaticity (CIE - X Y)	368, 378
Colour Rendering Index (CRI) or (Ra)	68
Typical Warm Up Time (Minutes)	3-5
Typical Hot Restart Time (Minutes)	8-12
Burning Position	Horizontal $\pm 15^\circ$



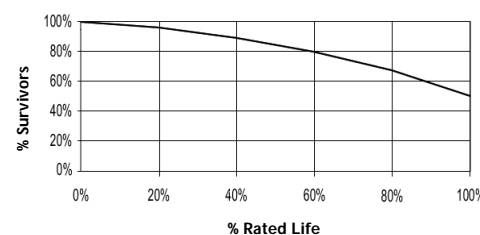
Physical Data / Requirements

Base Designation	E40
Bulb Designation	T65
Bulb Diameter (mm)	65
Max. Overall Length (mm)	380
Light Centre Length (mm)	243
Effective Arc Length (mm)	80
Max. Base Temperature (°C)	250
Max. Bulb Temperature (°C)	550
Luminaire Type	Enclosed
Socket Pulse Rating (KV)	1
Mercury Content (mg)	68

Lumen Maintenance



Lamp Mortality



Lamp Electrical Data / Requirements

IEC Standard	-
Lamp Wattage (W)	1000
Lamp Operating Voltage (V)	130
Lamp Operating Current (Amps)	8.2
Min. Open Circuit Voltage (RMS)	198
Min. Starting Pulse (Peak V)	600V
Min. Pulse Width at V (microseconds)	1
Min. Pulse Rate Per 1/2 cycle	1
Pulse Position (Electrical Degrees)	60-90, 240-270

Revision: 19.01.12

Notes:

1) This Product Specification contains data about typical performance at nominal power. Actual values may depend on ballast and applications. Complies with (CE), Low Voltage (CE), WEEE and RoHS Directives.