

Lamp Current (A): 3.7A
 Ignitor Voltage (Min.): 3KV
 Luminaire Rating: Open/Enclosed
 Burning Position: Vertical±15°

HIPE 450W/V/UVS/EL/PS/740

Product Number: 47224

Lamp Type: Uni-Form Pulse Start eLamp

(See notes 4 and 5 below)

Performance Data

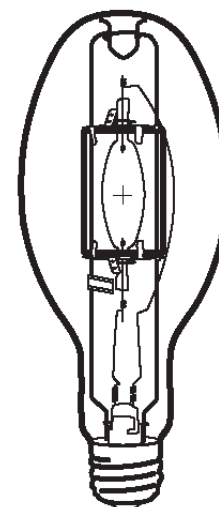
Light Output (Lumens @ 100 hours)	47000
Lamp Lumens Per Watt	104
Rated Life (Hrs. @ 10 Hr. /Start)	30000
Correlated Colour Temperature (K)	4000
Chromaticity (CIE - X Y)	385, 390
Colour Rendering Index (CRI) or (Ra)	68
Typical Warm Up Time (Minutes)	2-3
Typical Hot Restart Time (Minutes)	5-8
Burning Position	Vertical±15°

Physical Data / Requirements

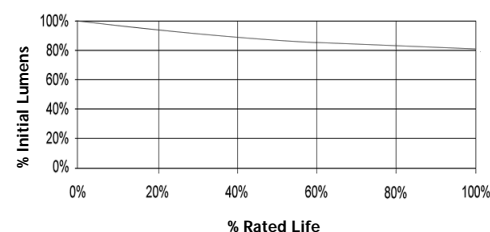
Base Designation	E40
Bulb Designation	E120
Bulb Diameter (mm)	120
Max. Overall Length (mm)	296
Light Centre Length (mm)	182
Effective Arc Length (mm)	43.6
Max. Base Temperature (°C)	250
Max. Bulb Temperature (°C)	450
Luminaire Type	Open/Enclosed
Socket Pulse Rating (KV)	4.5
Mercury Content (mg)	58.0

Lamp Electrical Data / Requirements

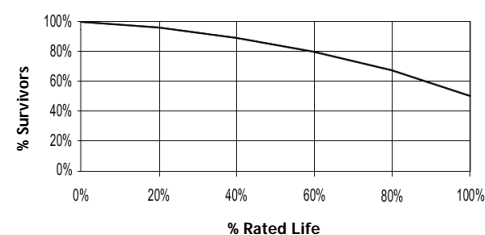
IEC Standard	-
Lamp Wattage (W)	450
Lamp Operating Voltage (V)	135
Lamp Operating Current (Amps)	3.7
Min. Open Circuit Voltage (RMS)	198
Min. Starting Pulse (Peak V)	3000-4500
Min. Pulse Width at 2700V (microseconds)	1
Min. Pulse Rate Per ½ cycle	1
Pulse Position (Electrical Degrees)	60-90, 240-270



Lumen Maintenance



Lamp Mortality



Revision: 02.05.12

Notes:

- 1) This Product Specification contains data about typical performance at nominal power. Actual values may depend on ballast and applications. Complies with (CE), Low Voltage (CE), WEEE and RoHS Directives.
- 2) Rated Life is based on operation with Ventronic® or specifically approved electronic ballasts.
- 3) Minimum Operating Temperature: -40°C
- 4) Formerly was standard Uni-Form Pulse Start
- 5) Optimised for electronic control gear (Ventronic)