

HQL 400 W E40

HQL | High intensity discharge lamps



- Factories and workshops
- Industrial installations
- Streets
- Car parks, courtyards
- Pedestrian zones, public squares
- Parks and gardens



Technical data

Electrical data

Nominal wattage	400 W
PFC capacitor at 50 Hz	25 μ F ¹⁾
Rated wattage	386.4 W
Lamp current	3.3 A
Rated lamp efficacy (standard condition)	57 lm/W

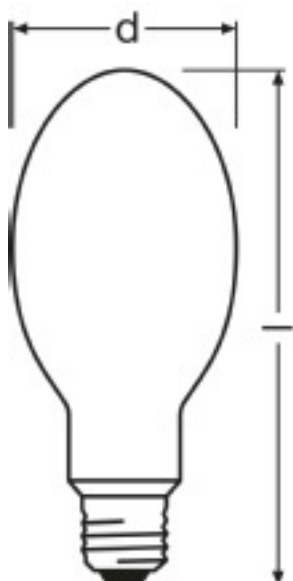
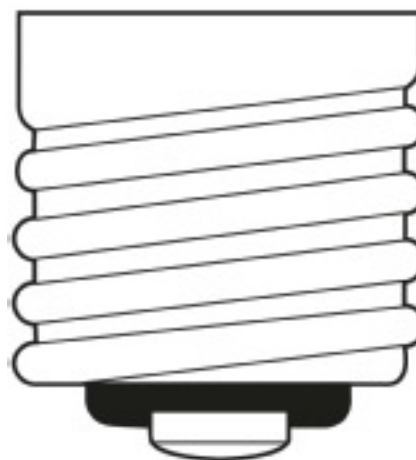
¹⁾ At rated voltage and $\cos \varphi \geq 0.9$

Light technical data

Nominal luminous flux	22000 lm
Color temperature	3900 K
Color rendering group	4
Rated luminous flux	22200 lm
Color rendering index Ra	39
Luminance	10.5 cd/cm ²
Rated LLMF at 2,000 h	0.95
Rated LLMF at 4,000 h	0.92
Rated LLMF at 6,000 h	0.90
Rated LLMF at 8,000 h	0.87
Rated LLMF at 12,000 h	0.85
Rated LLMF at 16,000 h	0.80
Rated LLMF at 20,000 h	0.77

Dimensions & weight

Diameter	122.0 mm
Length	285.0 mm

*Product line drawing with letters*

E40
IEC 7004-24
DIN 40625

Base

Colors & materials

Lamp mercury content	63.2 mg
Mercury-free	No

Temperatures

Maximum permitted outer bulb temperature	380 °C
Maximum permitted base edge temperature	250 °C

Lifespan

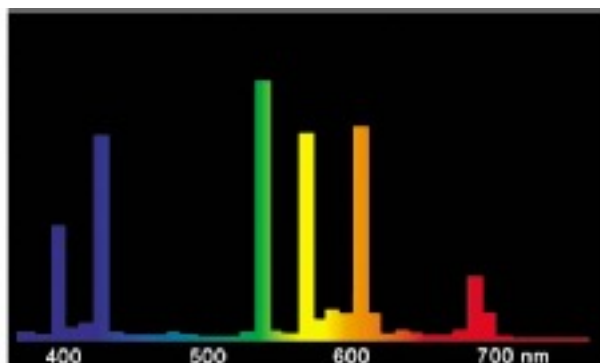
Rated lamp survival factor at 2,000 h	0.99
Rated lamp survival factor at 4,000 h	0.99
Rated lamp survival factor at 6,000 h	0.99
Rated lamp survival factor at 8,000 h	0.99
Rated lamp survival factor at 12,000 h	0.98
Rated lamp survival factor at 16,000 h	0.95

Lifespan

Rated lamp survival factor at 20,000 h	0.81
Operation mode LLMF/LSF	50 Hz

Additional product data

Base (standard designation)	E40
Design / version	Coated



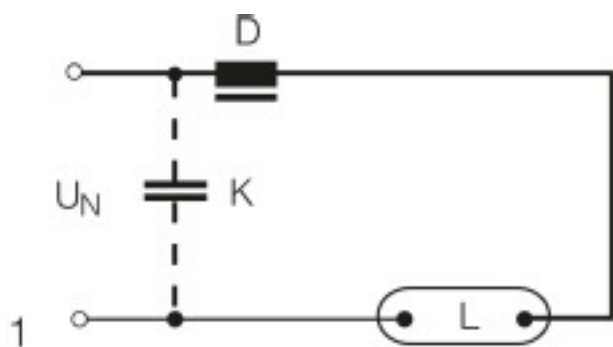
HQL® DE LUXE
HQL®-R DE LUXE

*Spectral power distribution***Capabilities**

Dimmable	No
Burning position	Any

Country specific categorizations

ILCOS	QE/R-400/40/3-H-E40-122/285
-------	-----------------------------



Circuit diagram

Logistical Data

Product code	Packaging unit (Pieces/Unit)	Dimensions (height x width x length)	Gross weight	Volume
4008321002020	Round wrap 1	- x - x -		
4008321002037	Shipping carton box 12	- x - x -		
4050300015071	Round wrap 1	125 mm x 125 mm x 295 mm	298.00 g	4.61 dm ³
4050300212562	Shipping carton box 12	420 mm x 322 mm x 545 mm	5341.00 g	73.71 dm ³
4050300808512	Shipping carton box 6	263 mm x 319 mm x 375 mm	2280.00 g	31.46 dm ³

Disclaimer

Subject to change without notice. Errors and omission excepted. Always make sure to use the most recent release.